

HTDA-8125**Horizontal Tunable Dipole Antenna 125 W**

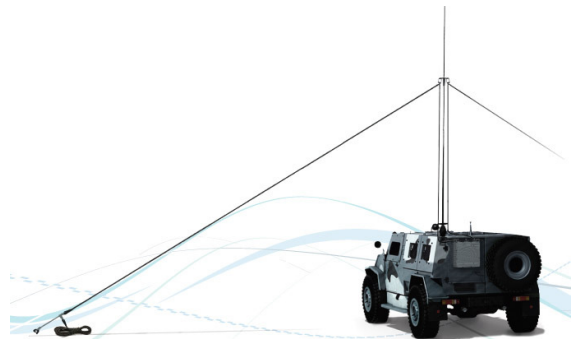
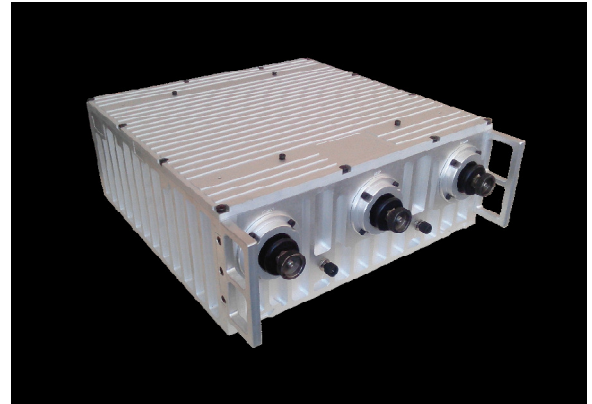
The HTDA-8125 antenna is designed to provide the efficient matching of 125 W transmitter output with different whip and dipole antennas in the HF frequency range (1.5...30.0 MHz). The HTDA-8125 implements fast, fully automatic matching for digital and voice communication, with ALE and ECCM modes support.

The antenna provides the following configurations:

- Operation with standard HF 5 m whip on move;
- Fast deployment of HF dipole (inverted V) with whip as the mast.

Features:

- Automatic switching from whip mode to dipole and back
- High efficiency, low losses
- Excellent VSWR (<1.4)
- Reliable field proof operation in harsh environment

**TECHNICAL SPECIFICATIONS**

Frequency range:	1500..30000 kHz
Antenna types:	dipole 8-25 m whip 4.7-6.0 m
Bandwidth at VSWR= 2.0 level:	13.3kHz (at 1.5MHz), 16.8MHz (at 2MHz)
RF Input power:	125 W PEP and Average
RF tuning power	5 - 10 W
Input VSWR at carrier frequency:	<1.4
Tuning time by algorithm:	<2 s
Tuning time from memory:	<3 ms
Power supply voltage:	+27 VDC @ 1 A
Humidity:	95% @ +20°C to +50°C
ATU dimensions:	464x458x163 mm without tray, 466x458x208 mm with tray;
ATU weight:	15.5 kg
Operation temperature range:	-40°C +65°C
Control interface:	RS232
Housing :	Aluminum