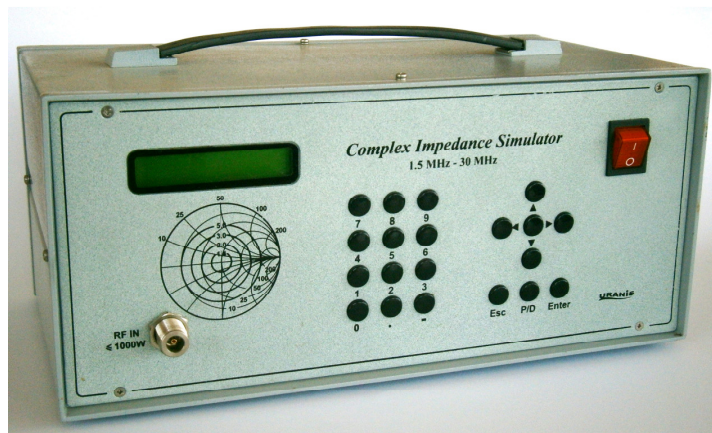


Complex Impedance Simulator 1000 W CIS-1000

Complex Impedance Simulator CIS-1000 is designed to test the transmitters and power amplifiers operation with complex loads at fixed frequencies in the HF frequency range with 1000 W maximum input power.

CIS-1000 allows testing of transmission and antenna couplers with no RF power emission.

Connection of the CIS-1000 to the standard PC makes the RF design or test easy and more effective.



Two versions of the CIS-1000 are available: stand alone or standard 19" rack mount

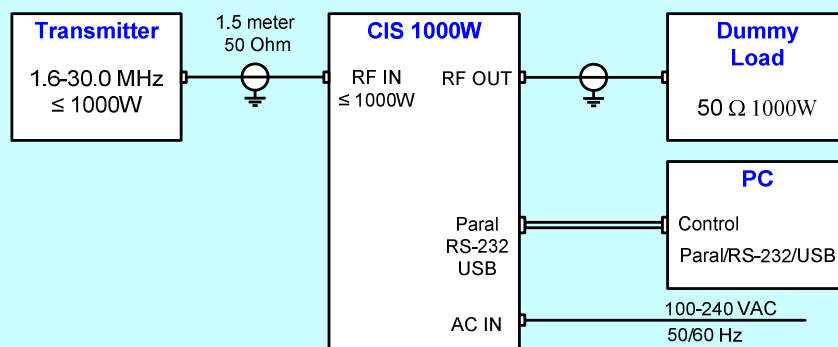
Main Technical Specifications

Frequency Range	2.0 MHz; 6.75 MHz; 16.0 MHz; 25.5 MHz
Input power	Less then 1000 W (continuous)
Load Resistance	50 Ohm 1000W
Primary Voltage	100–240 VAC 50/60 Hz
Dimensions	482 x 392.5 x 88 mm
Weight	4.2 kg

Parameters of the working points for mismatch loop configurations

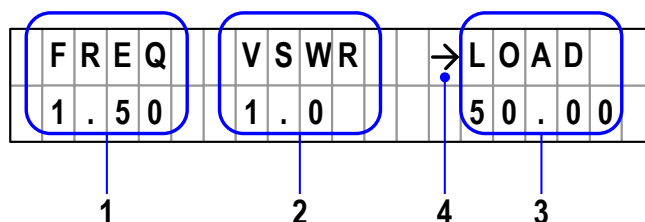
Resistance, Ohm	Conductivity, Cm	VSWR		
		min	nom	max
50			1.0	1.1
50 + j20 50 – j20	0.02 + j0.00814 0.02 – j0.00814	1.4	1.5	1.6
33.3 75.0				
50 + j35 50 – j35	0.02 + j0.01414 0.02 – j0.01414	1.9	2.0	2.1
25.0 100.0				
50 + j60 50 – j60	0.02 + j0.023 0.02 – j0.023	2.9	3.0	3.1
16.67 150.0				
50 + j74.13 50 – j74.13	0.02 + j0.03 0.02 – j0.03	3.9	4.0	4.1
12.5 200.0				
50 + j102 50 – j102	0.02 + j0.041 0.02 – j0.041	5.9	6.0	6.1
8.33 300.0				
Short Open			>30	

CIS-1000 Connection diagram



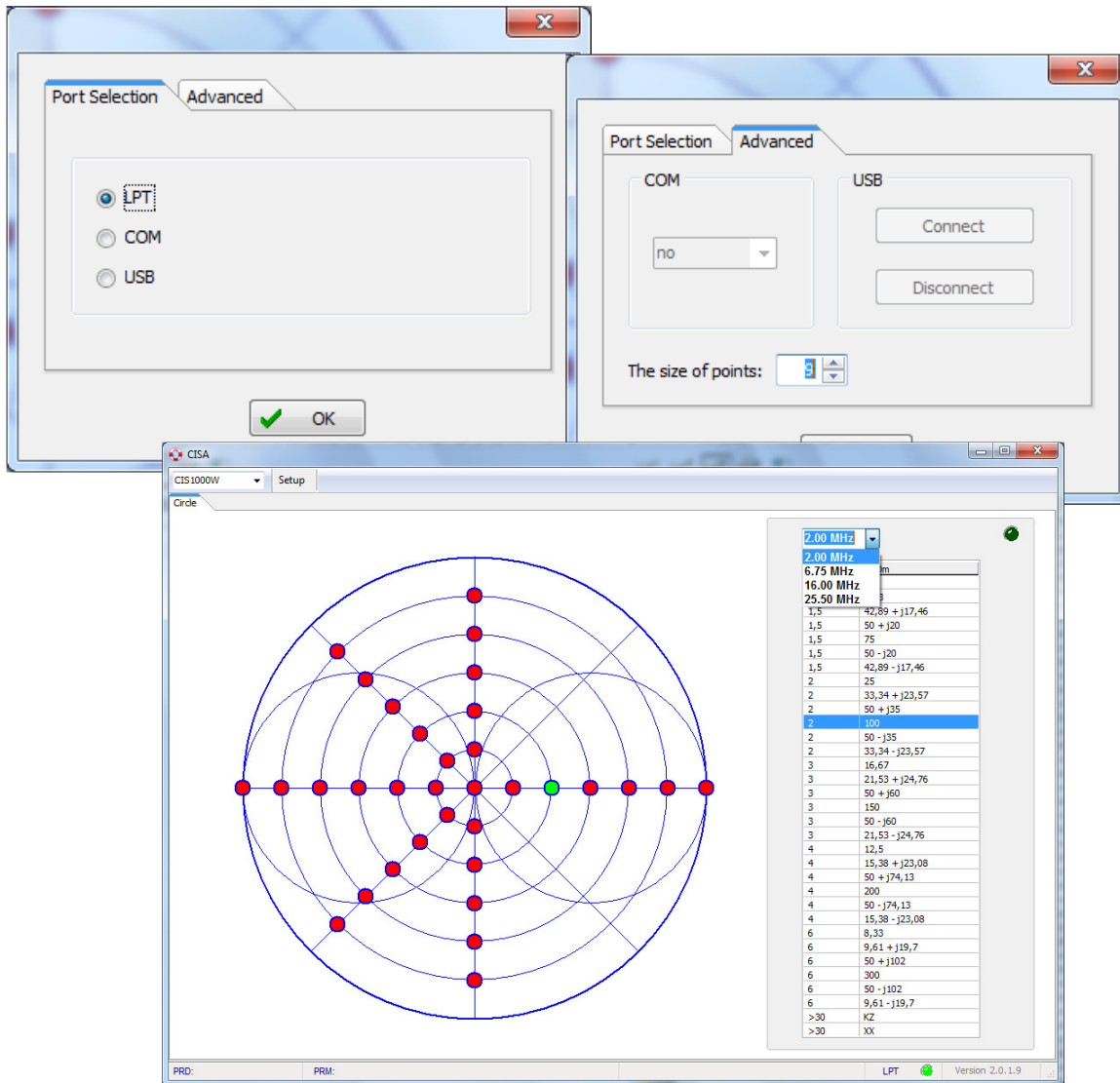
Appearance of the information on display

1. Indication of the selected operating frequency.
2. Indication of VSWR.
3. Complex Load Indication
4. Tag indicator of active menu.



CISA © is simple and intuitively clear software allowing RF designer to use CIS-50 by clicking the mouse buttons.

CISA © is operating with Win XP/Vista/7 and requires no special knowledge for installation.



PACKAGING OUTLINES (19" rack mount version)

