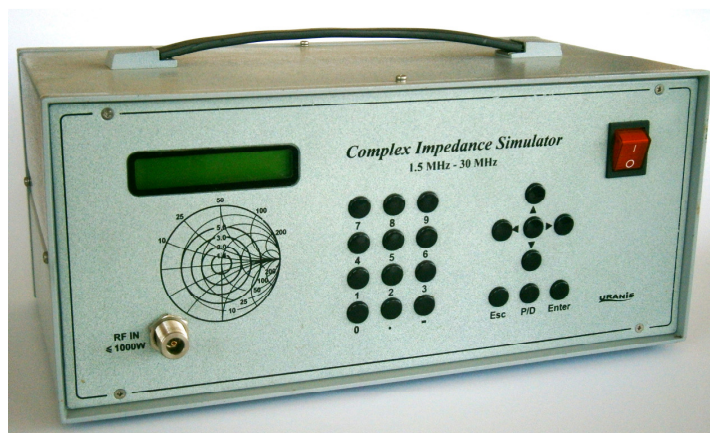


Complex Impedance Simulator 50 W CIS-50

Complex Impedance Simulator CIS-50 is designed to test the transmitters and power amplifiers operation with complex loads at fixed frequencies in the HF frequency range with 50 W maximum input power.

CIS-50 allows testing of transmission and antenna couplers with no RF power emission.

Connection of the CIS-50 to the standard PC makes the RF design or test easy and more effective.



Two versions of the CIS-50 are available:
stand alone or standard 19" rack mount

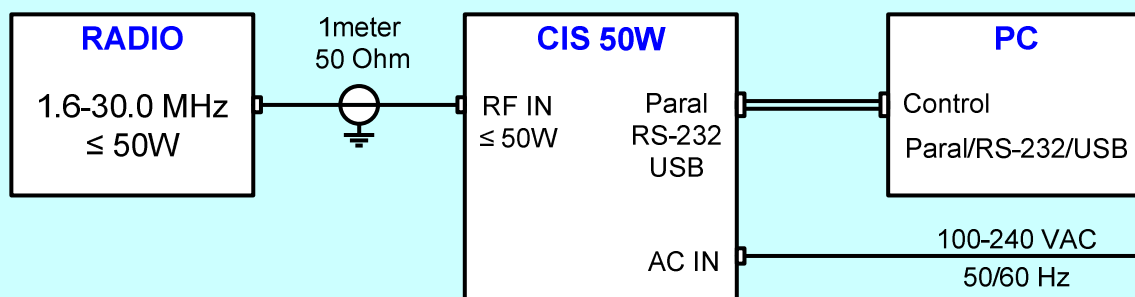
Main Technical Specifications

Frequency Range	1.5 MHz; 6.75 MHz; 28.0 MHz
Input power	Less then 50 W (continuous)
Load Resistance	not required (there is an internal load, $R_L = 50 \Omega$)
Primary Voltage	100–240 VAC 50/60 Hz
Dimensions	482 x 406.5 x 88 mm
Weight	6.2 kg

Parameters of the working points for mismatch loop configurations

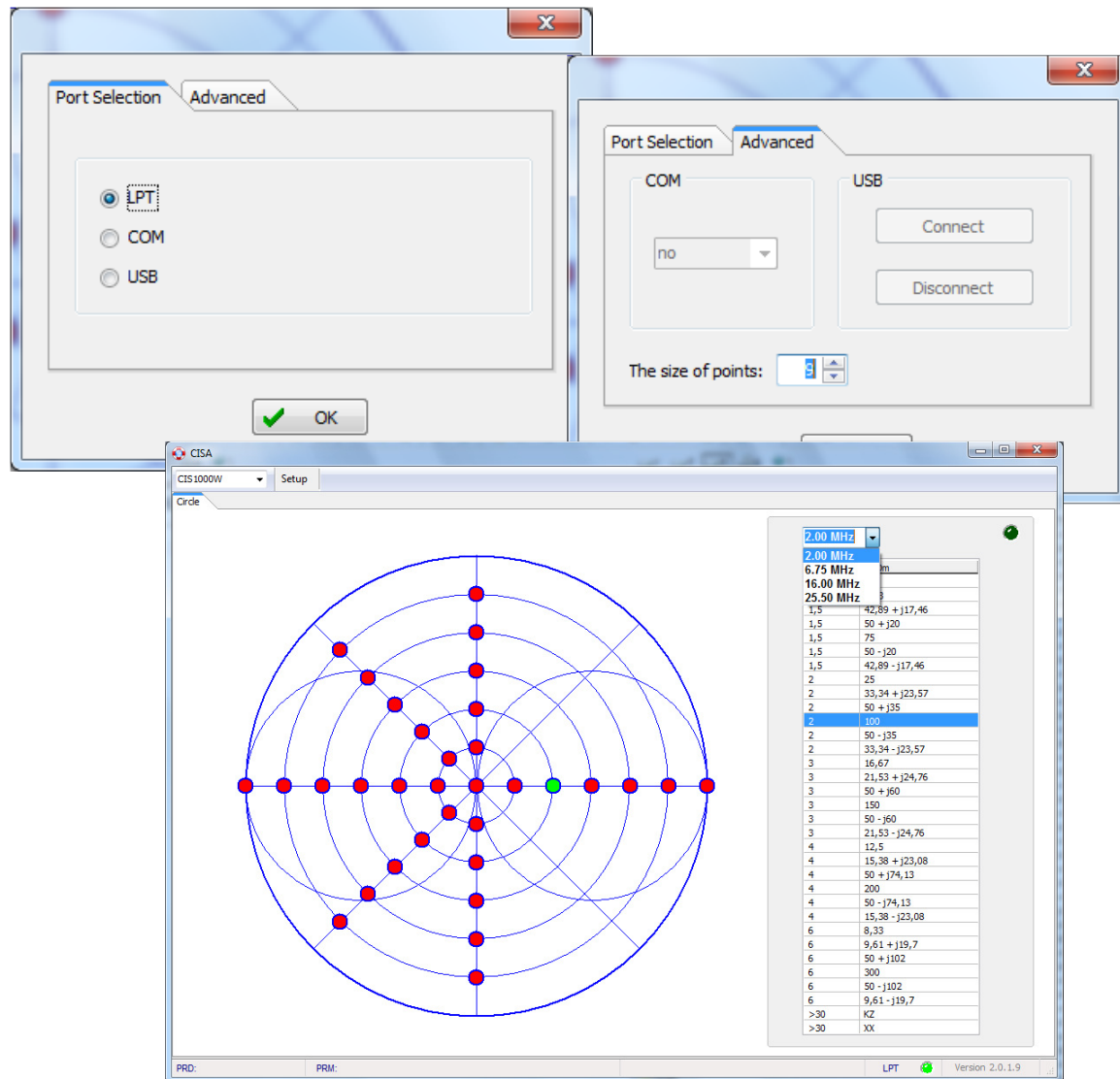
Resistance, Ohm	VSWR		
	min	nom	max
50		1.0	1.1
40 62.5	1.2	1.25	1.3
33.3 75 40 + j15.3 40 – j15.3 62.5 + j19.1 62.5 – j19.1	1.45	1.5	1.55
27.7 90 33.3 + j17.7 33.3 – j17.7 75 + j27 75 – j27	1.75	1.8	1.85
12.5 200	3.9	4.0	4.1
12.5 + j34.5 12.5 – j34.5 40 + j90.7 40 – j90.7	5.9	6.0	6.1
62.5 + j240 62.5 – j240	18	20	22
Short Open		>30	

CIS-50 Connection diagram



CISA © is simple and intuitively clear software allowing RF designer to use CIS-50 by clicking the mouse buttons.

CISA © is operating with Win XP/Vista/7 and requires no special knowledge for installation.



PACKAGING OUTLINES (19" rack mount version)

